

ULTRASOUND SCANNER

SP-2000

- Compact Body , Light Weight.
- One Station Working Platform.
- Integrated Image Capture.
- Integrated Patient Management.
- Integrated Report Edit.
- Optional 20MHz probe for Anterior or Posterior segment



SonopTek Product

Ophthalmic Ultrasound A-Scan/B-Scan



Innovative, High-Quality Ophthalmic Instruments



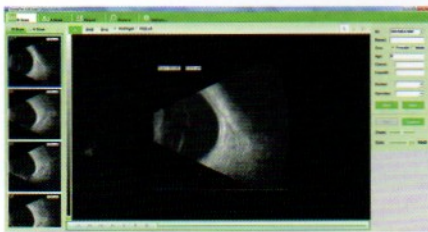
ULTRASOUND SCANNER

SP-2000

Ophthalmic Ultrasound A-Scan/B-Scan



Workstation



SP-2000 SPECIFICATION

1. General			
Modules:			
Ophthalmic Ultrasound B-Scan		Ophthalmic Biometry A-Scan	
Features:			
USB Connection		Integrated Image Capture	
Integrated Patient Database		Integrated Report Editor	
2. A-Scan			
Scan Modes:			
Contact / Immersion			
Examination Modes:			
Normal	Dense Cataract	Aphakic	Pseudophakic (PMMA, Acrylic, Silicone)
Measurements:			
AXL, ACD, Lens and Vitreous		Individual Segment Velocities	
Average and Standard Deviations for AXL, ACD, Lens & Vitreous			
Specifications:			
Clinical Accuracy $\pm 0.1\text{mm}$		Electrical Accuracy 0.0375mm	
IOL Calculation in 0.5D Increments			
IOL Calculation Formulas:			
Refractive:	SRK-II	SRK-T	Binkhorst-II Holladay Hoffer-Q Haigis
Post-Refractive:	Latkany Myopic	Latkany Hyperopic	Double-K/SRK-T
A-Scan Probe:			
Hand-Held, Immersion or Slit Lamp Mounted Applicable			
3. B-Scan:			
Scan Modes:			
B Mode	B+A Mode	B+B Mode	
Features:			
Adjustable Zoom, Gain		Variable Gain Control	256 Levels Gray Scale
Capture of Frames and Cline Loops Available		Clinical Resolution: 0.2mm	
Probe:			
Transducer Frequency: 12.5MHz		53°Sector Scanning Method	
Optional:			
20MHz FD 25mm for Posterior segment			
Accuracy: 0.1mm			
System Support: Windows XP/Vista/7/8			

Address : Rm1504, Bldg 1st, Huihuanguoji Plaza, 10th Shangdi Street, Haidian District, Beijing 100085

Tel : +86-10-59713135

Fax : +86-10-59713135

E-mail: Info@sonoptek.com

www.sonoptek.com

